

# Great Western Trail Veterans Parkway

Warren County Conservation Board

Warren County

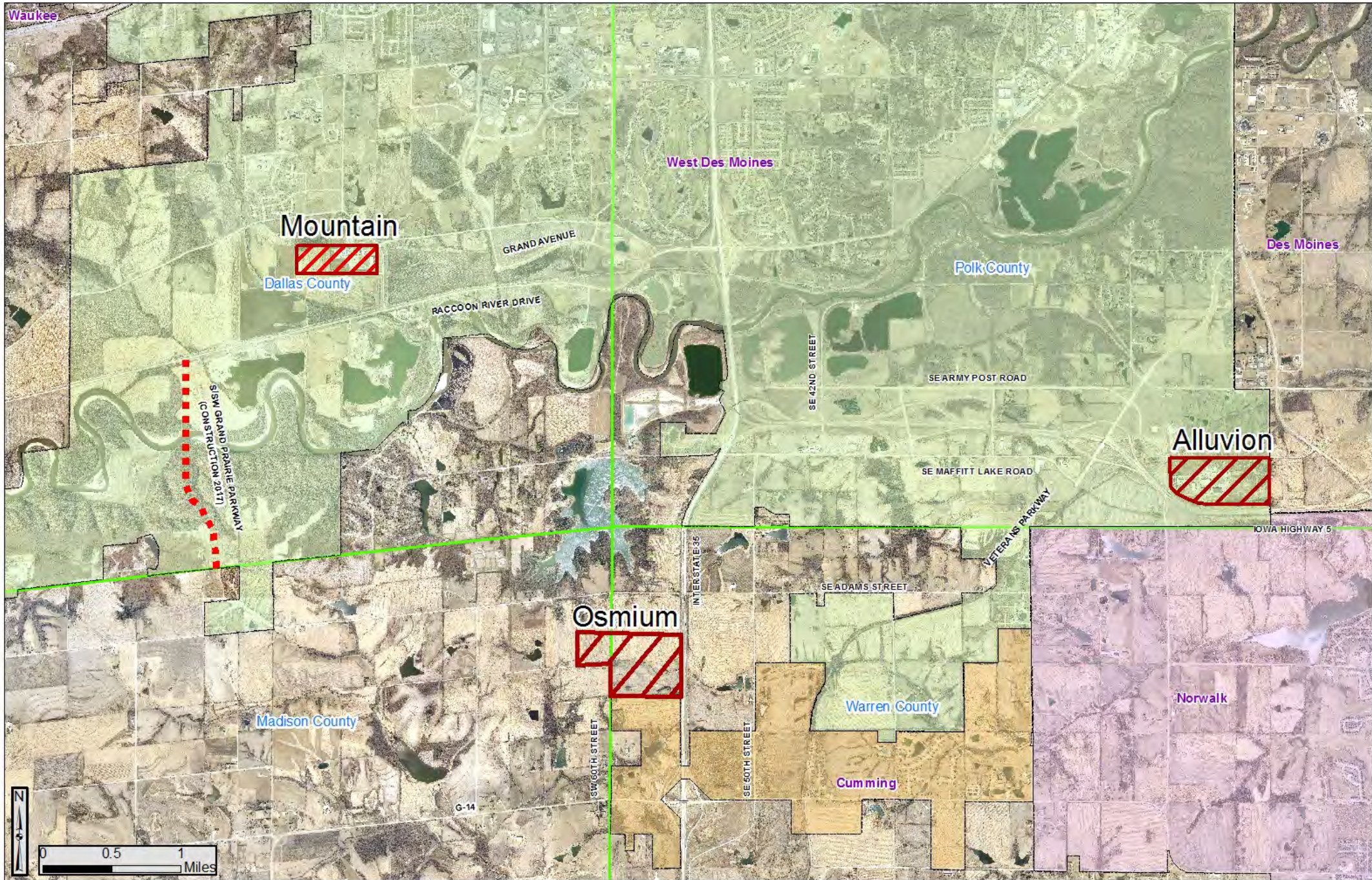
City of West Des Moines



# Introduction

- ▶ Warren County Conservation Board - Thank you
- ▶ Warren County Board of Supervisors
- ▶ City of West Des Moines
- ▶ Microsoft Project Osmium

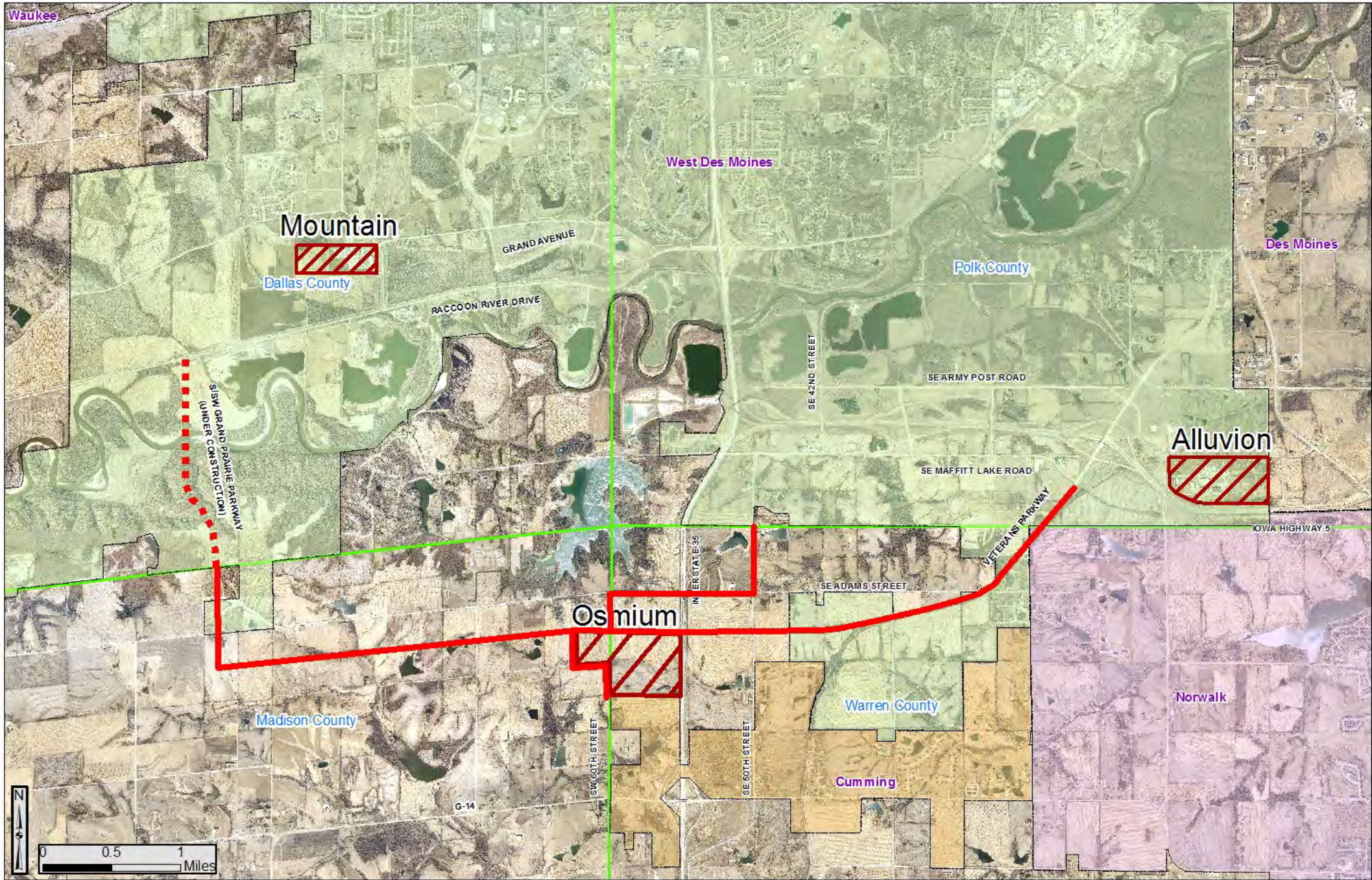




# Microsoft Project Osmium Proposed Public Improvements

- ▶ Water
- ▶ Sewer
- ▶ Streets





# Microsoft Project Osmium Critical Path Elements

- ▶ Site Access
- ▶ Initial Potable Water - To Start Site Construction
- ▶ Sewer Availability



# Microsoft Project Osmium Tentative Schedule

- ▶ Street, Sewer, Water Design - Early 2017
- ▶ Paving SE 50<sup>th</sup> Street, Adams Street, SW 60<sup>th</sup> Street - Spring 2017
- ▶ Construction Water - Spring 2017
- ▶ Sewer - Spring-Summer 2017
- ▶ Microsoft Site Construction - Spring 2017 - ?
- ▶ Paving Veterans Parkway, Grand Prairie Parkway, SW 60<sup>th</sup> Street  
Summer 2017 - End 2018



# Southwest Connector Study

- ▶ Originally Studied by Snyder and Associates
  - ▶ 2006-2012
- ▶ HR Green started work in 2012
  - ▶ Completed in July 2014
- ▶ Commissioned by Warren County
- ▶ Advisory Team Representation
  - ▶ Warren County
  - ▶ Polk County
  - ▶ Madison County
  - ▶ City of Cumming
  - ▶ City of Norwalk
  - ▶ City of West Des Moines
  - ▶ Des Moines Area Metropolitan Planning Organization
  - ▶ Iowa Department of Transportation
  - ▶ Federal Highway Administration





# Southwest Connector Study

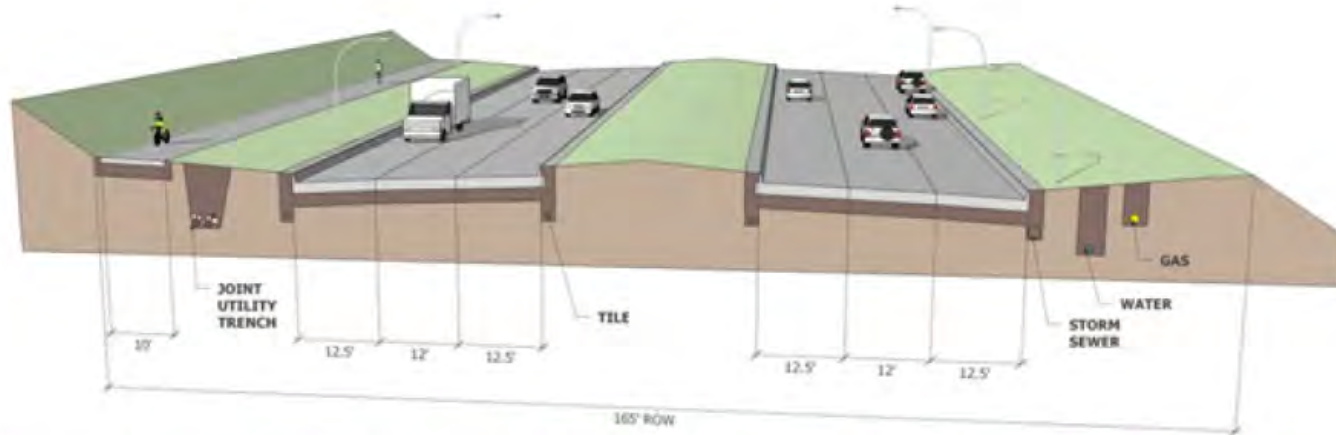


Figure 1 - Conceptual Design of Ultimate Vision for SW Connector East of I-35

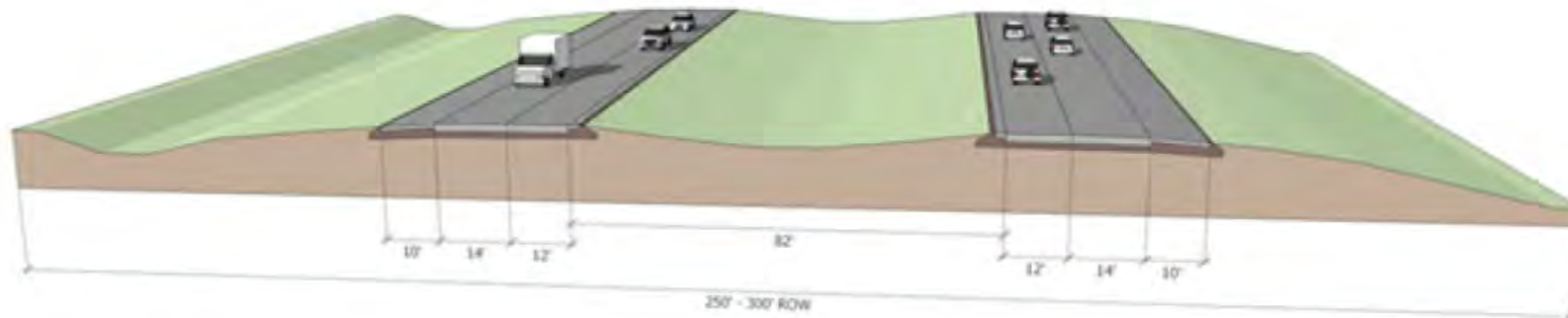
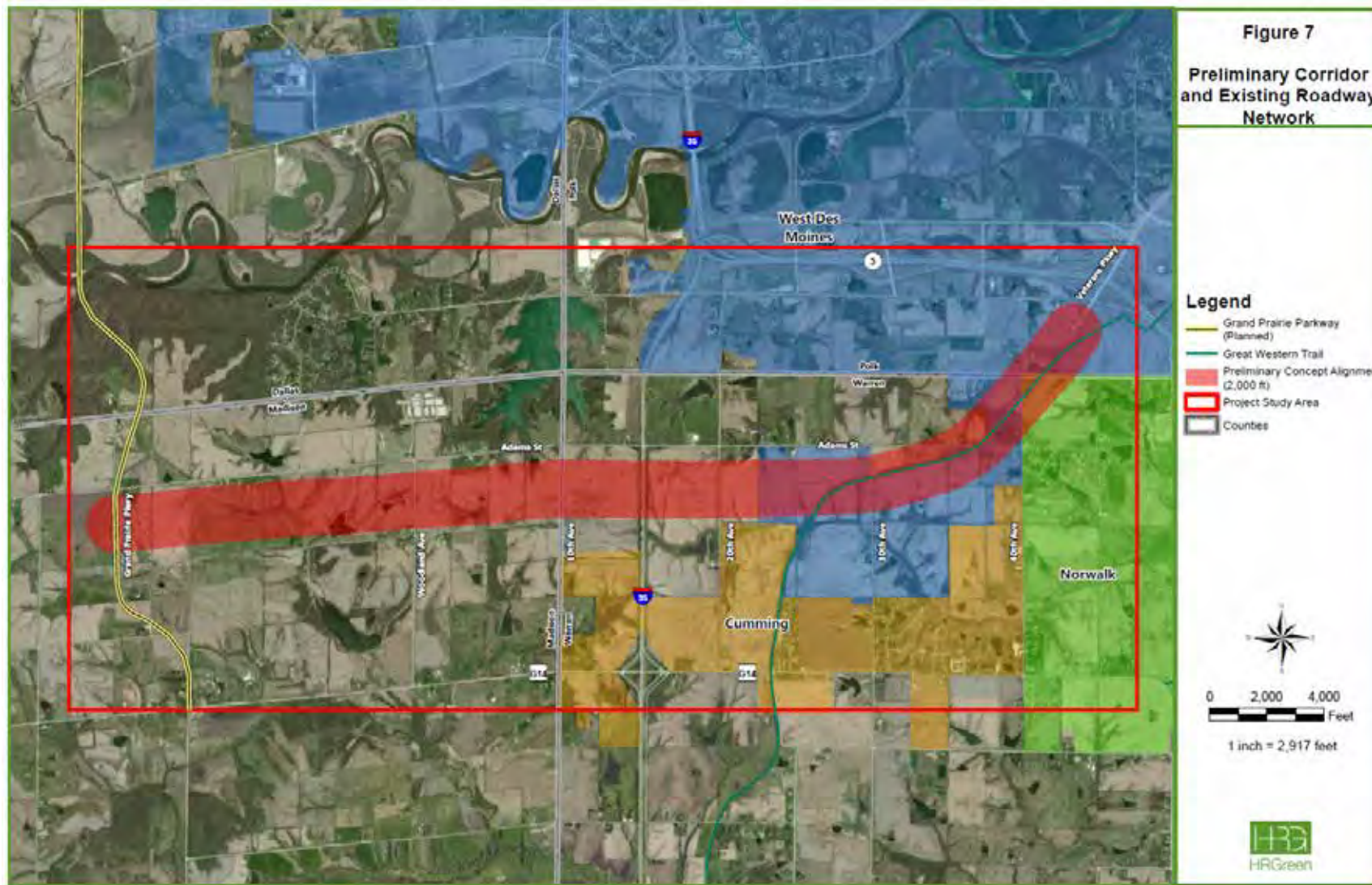
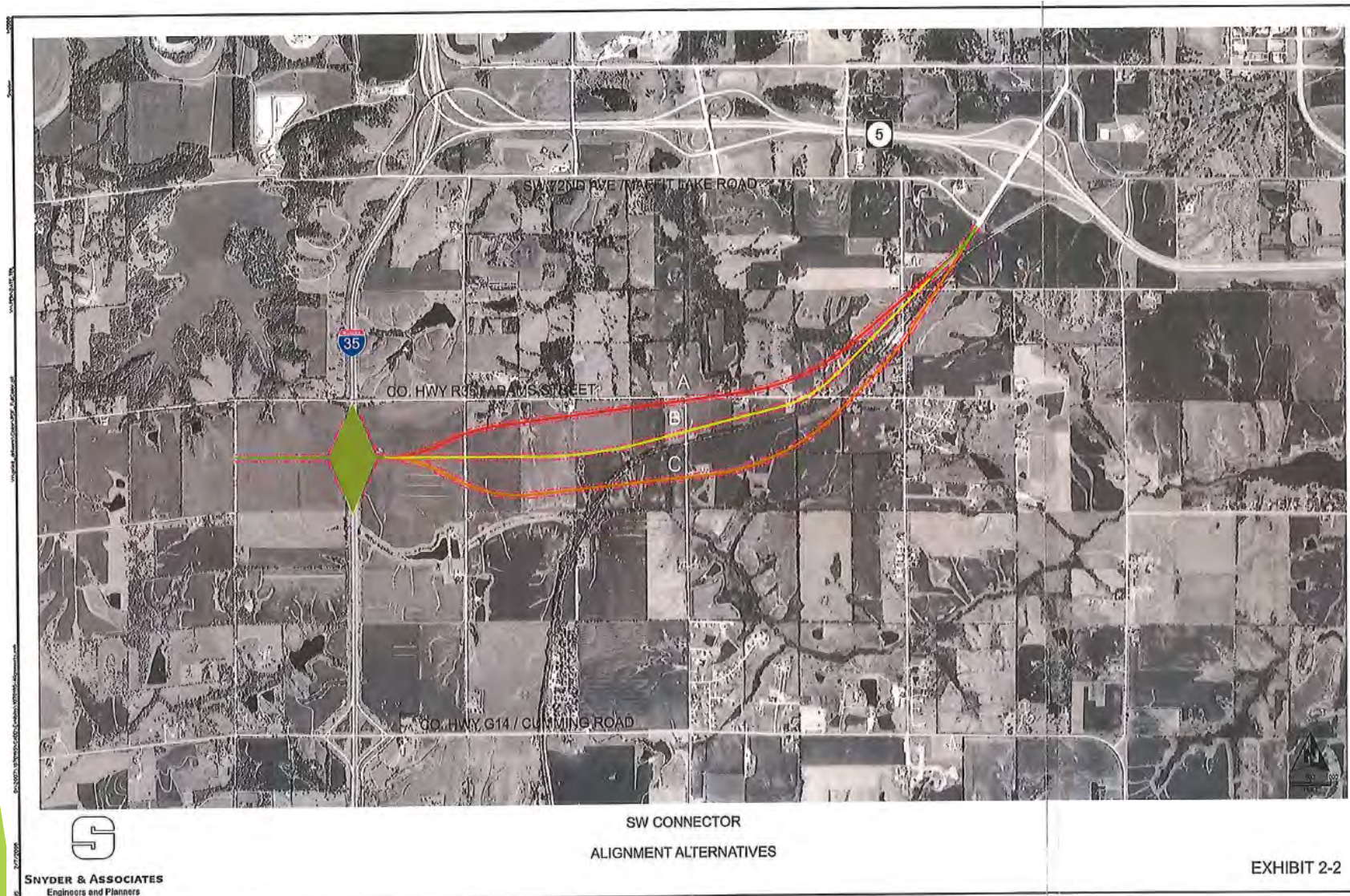


Figure 2 - Conceptual Design of Ultimate Vision for SW Connector West of I-35

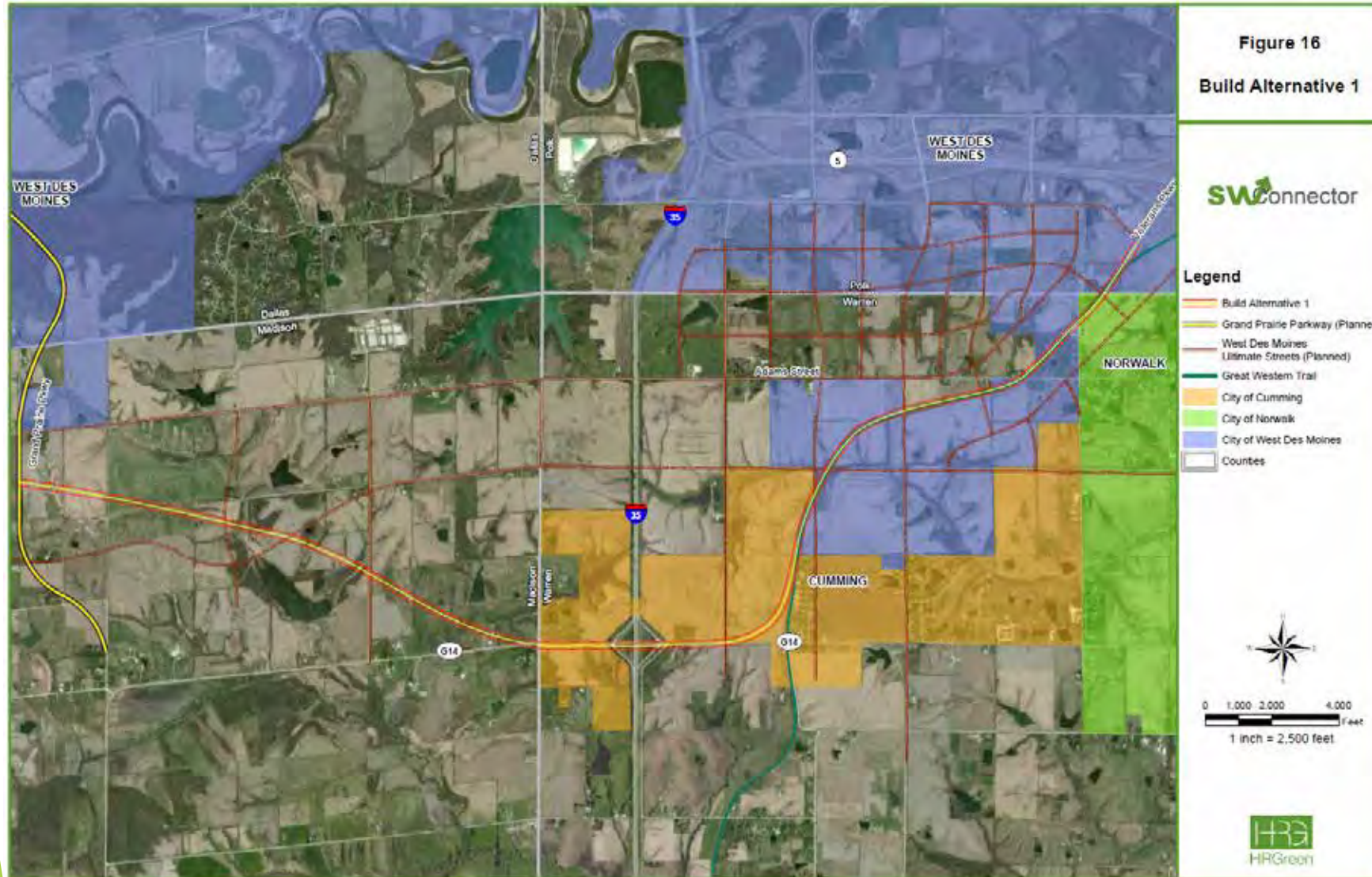
# Southwest Connector Study



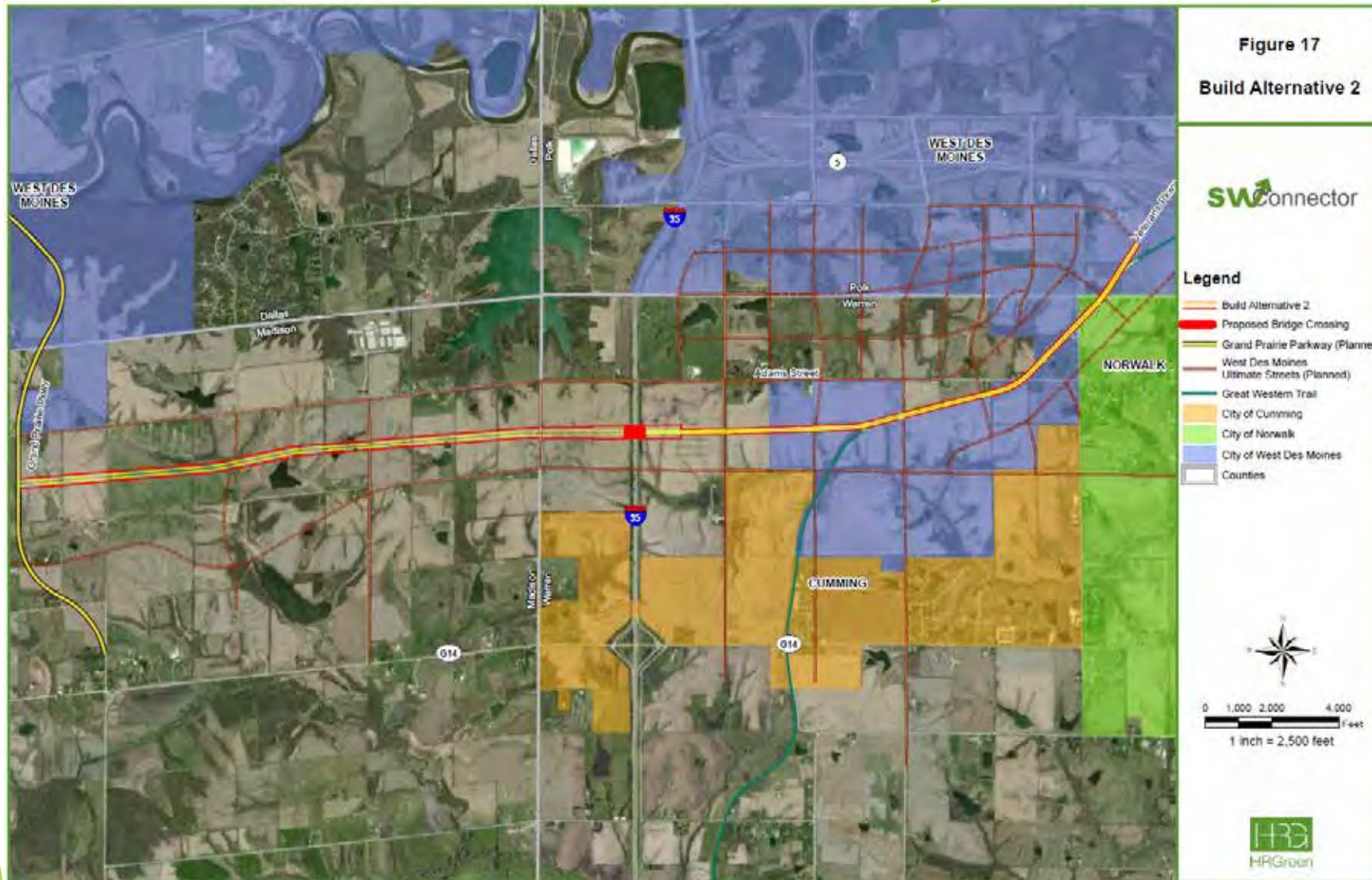
# Southwest Connector Study



# Southwest Connector Study



# Southwest Connector Study



# Southwest Connector Study Public Input

- ▶ Website
- ▶ Published Notices in Newspapers
- ▶ Affected Property Owners were contacted directly
- ▶ Public Meetings



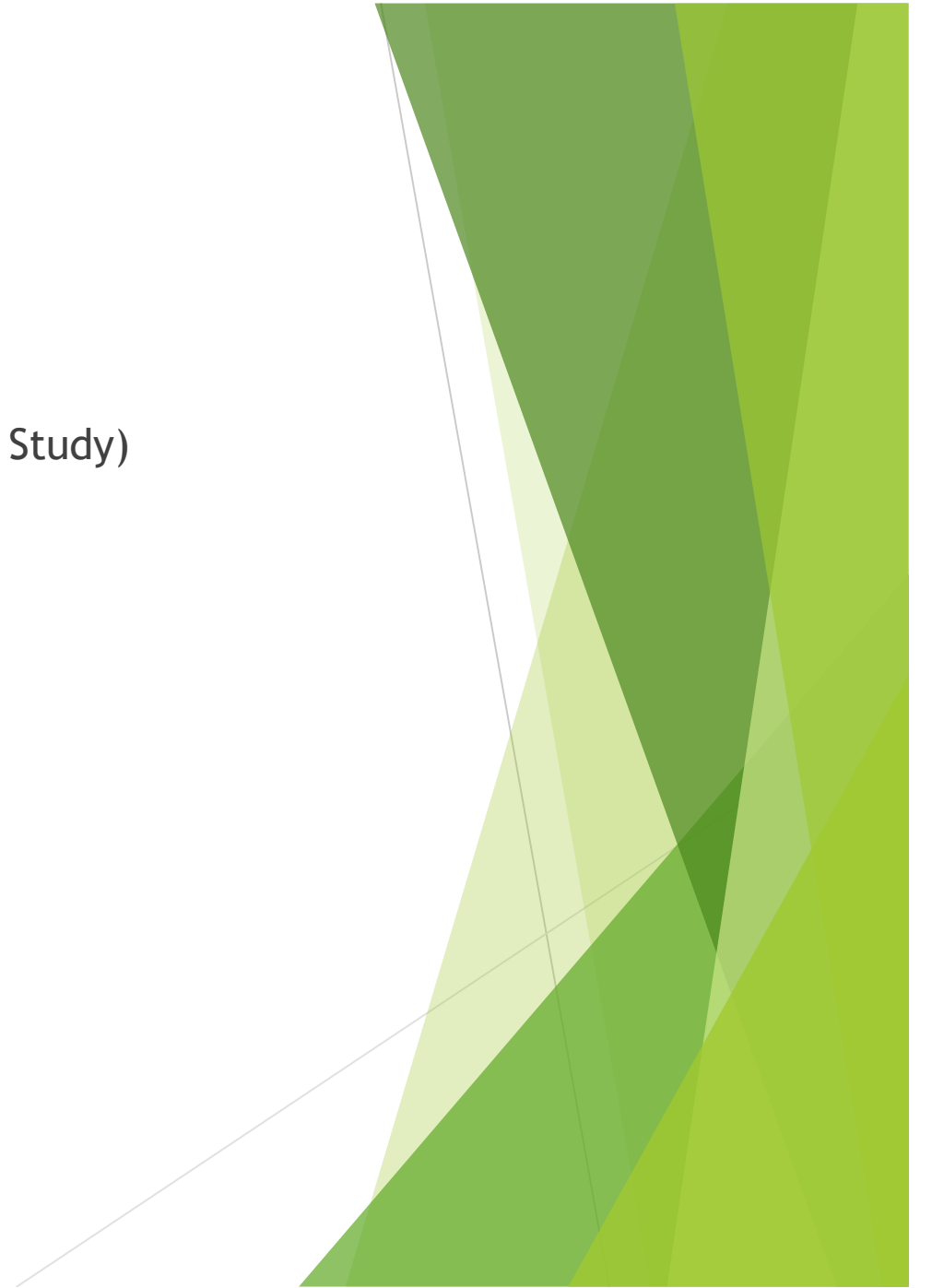
# Southwest Connector Study Public Input

- ▶ Outcome
  - ▶ Minimize Impact to Houses
  - ▶ Minimize Impact to Property
  - ▶ Minimize Bisecting Property
  - ▶ Optimize Use of Existing Trail Corridor
- ▶ The Proposed Alignment chosen generally matched outcome of process



# Great Western Trail Veterans Parkway Alignment

- ▶ Veterans Parkway Preferred Alternative (From SW Connector Study)
  - ▶ Existing terminus of Veterans Parkway
  - ▶ Threads through houses in Orilla
    - ▶ Exception: One house built after study was finalized
  - ▶ Requires trail to be 10-foot-wide side path
    - ▶ Similar to trails along Jordan Creek Parkway and Mills Civic Parkway





# Great Western Trail Veterans Parkway Alignment

- ▶ Concerns Expressed
  - ▶ Proximity to Roadway
  - ▶ Sight Distance
  - ▶ Street Crossings
    - ▶ Future and Existing Street Crossings
    - ▶ Underpasses - Topography and Drainage
    - ▶ Mid-Block Crossings
  - ▶ Experience
    - ▶ Tree Canopy
    - ▶ Habitat



# Great Western Trail Veterans Parkway Alignment

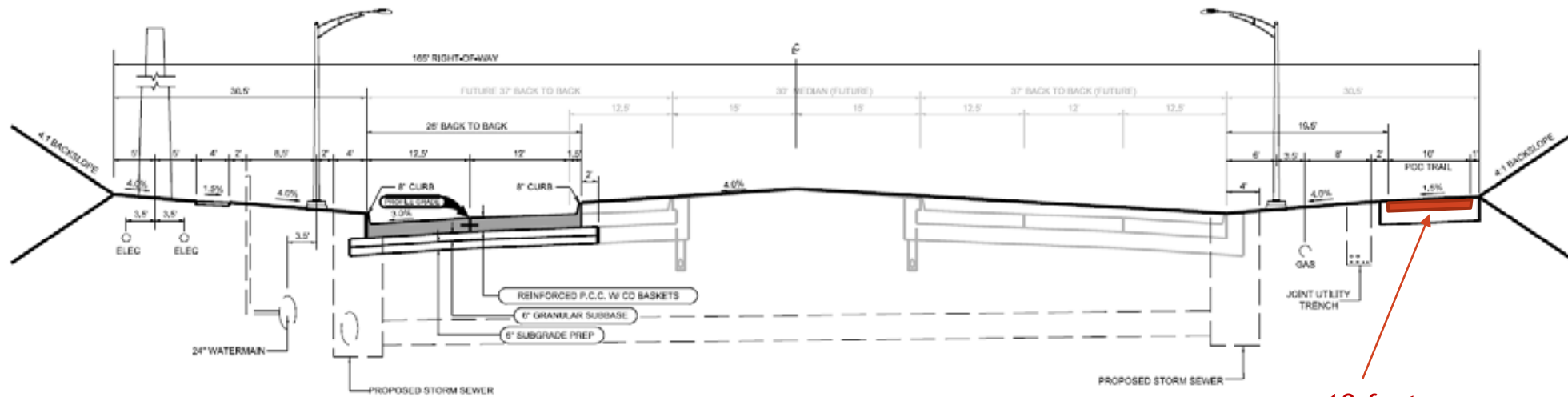
- ▶ Concerns Expressed (continued)
  - ▶ Existing Conditions
    - ▶ Poor Drainage
    - ▶ Short-Lived Trees/Tree Quality
    - ▶ Long-Term Trail Maintenance
  - ▶ If Existing Trail is removed...it is replaced with a similar size, quality and experience
  - ▶ Replacement cost should be part of the road project
  - ▶ Need input from all stakeholders in the design process



# Great Western Trail Veterans Parkway Alignment Alternatives

- ▶ Things to keep in mind about the Alternatives
  - ▶ First time they have been presented in a public meeting
  - ▶ Warren County Conservation Commission has not officially reviewed
  - ▶ Warren County Board of Supervisors has not officially reviewed
  - ▶ Impacted Property Owners have not officially reviewed

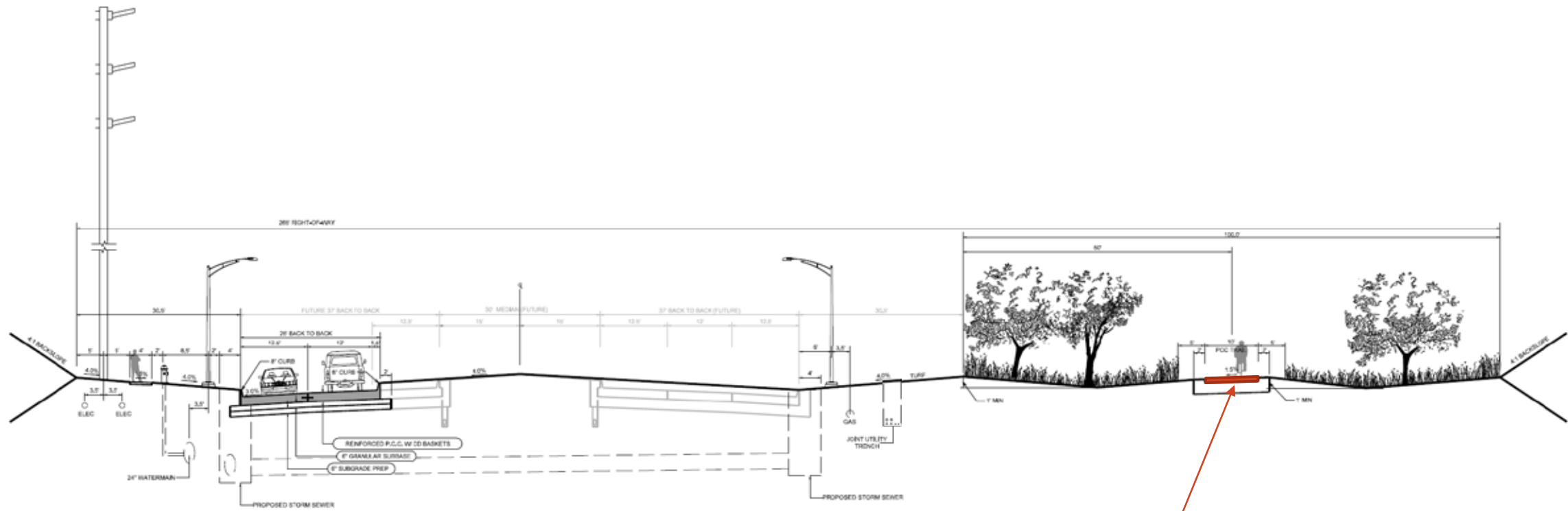
# Veterans Parkway/Great Western Trail Cross Sections



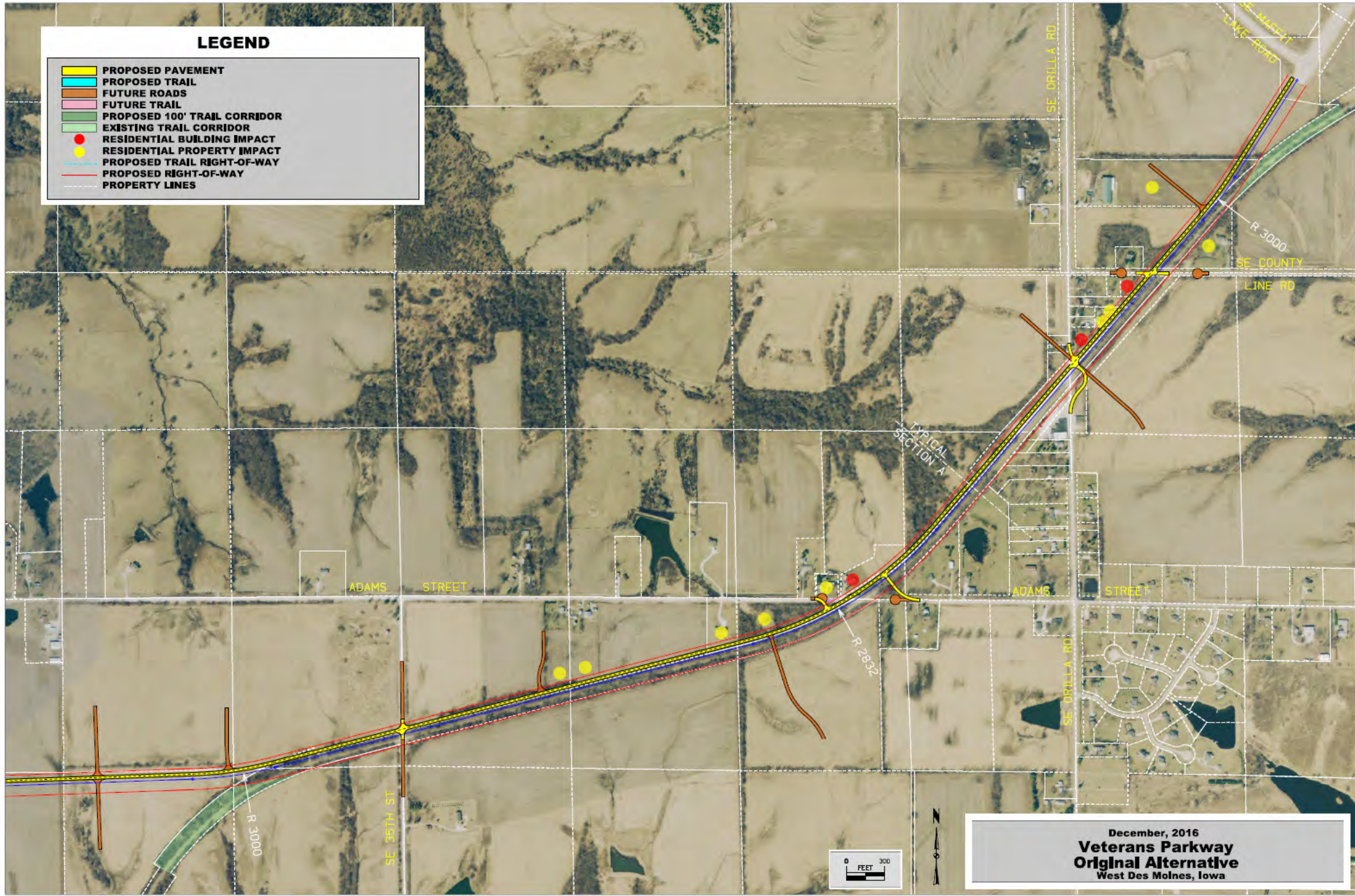
10-foot  
Sidewalk

Veterans Parkway with Great Western Trail as a sidepath

# Veterans Parkway/Great Western Trail Cross Sections



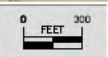
10-foot  
trail



**LEGEND**

- PROPOSED PAVEMENT
- PROPOSED TRAIL
- FUTURE ROADS
- FUTURE TRAIL
- PROPOSED 100' TRAIL CORRIDOR
- EXISTING TRAIL CORRIDOR
- RESIDENTIAL BUILDING IMPACT
- RESIDENTIAL PROPERTY IMPACT
- PROPOSED TRAIL RIGHT-OF-WAY
- PROPOSED RIGHT-OF-WAY
- PROPERTY LINES

December, 2016  
**Veterans Parkway**  
**Original Alternative**  
 West Des Moines, Iowa



ADAMS STREET

ADAMS STREET

SE ORILLA RD

SE 4160 35

SE ORILLA RD

R 3000

R 2832

R 3000

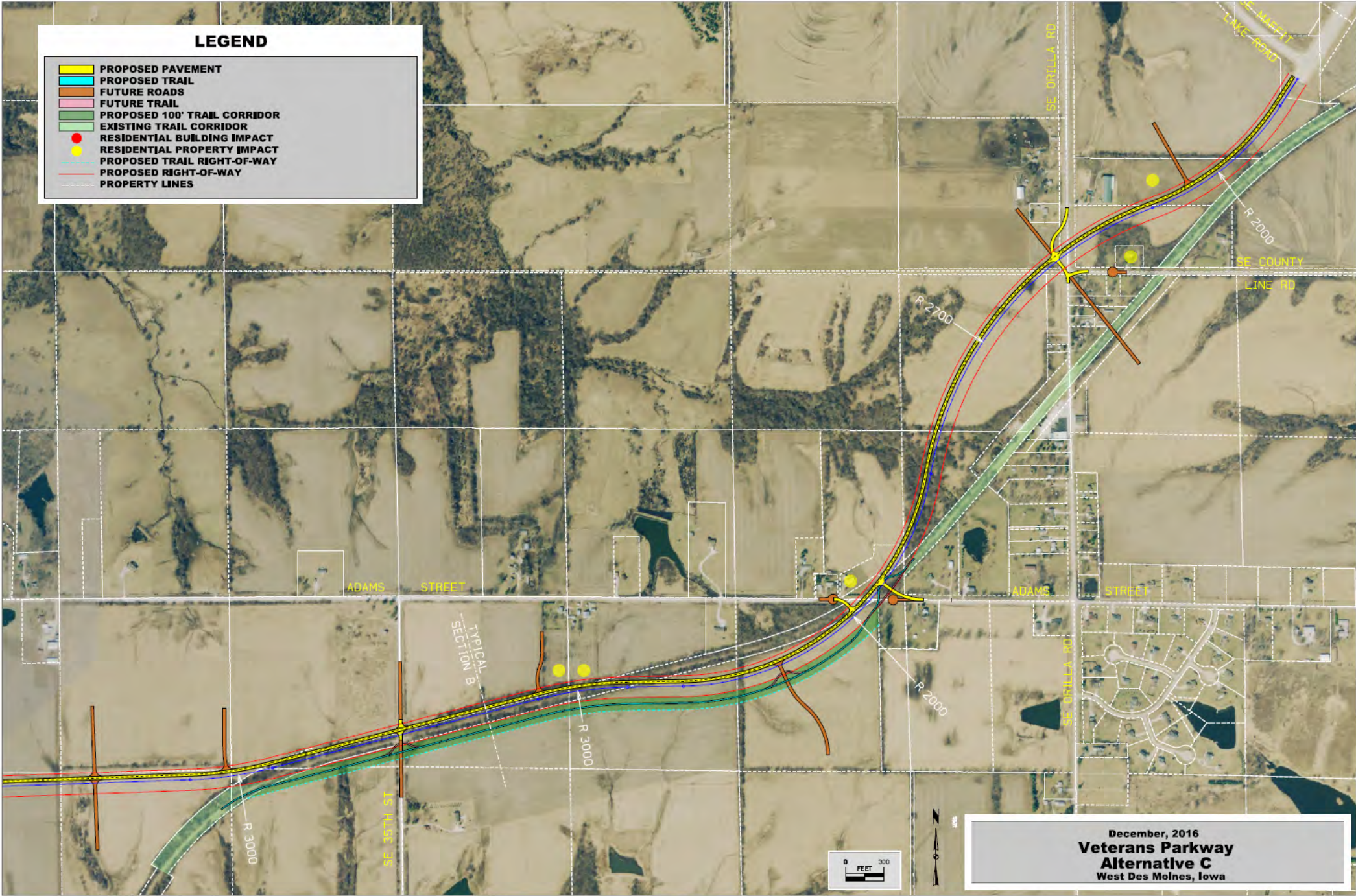
SE COUNTY  
LINE RD

TYPICAL  
SECTION A



**LEGEND**

- PROPOSED PAVEMENT
- PROPOSED TRAIL
- FUTURE ROADS
- FUTURE TRAIL
- PROPOSED 100' TRAIL CORRIDOR
- EXISTING TRAIL CORRIDOR
- RESIDENTIAL BUILDING IMPACT
- RESIDENTIAL PROPERTY IMPACT
- PROPOSED TRAIL RIGHT-OF-WAY
- PROPOSED RIGHT-OF-WAY
- PROPERTY LINES



December, 2016  
**Veterans Parkway  
 Alternative C**  
 West Des Moines, Iowa

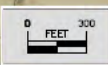


**LEGEND**

- PROPOSED PAVEMENT
- PROPOSED TRAIL
- FUTURE ROADS
- FUTURE TRAIL
- PROPOSED 100' TRAIL CORRIDOR
- EXISTING TRAIL CORRIDOR
- RESIDENTIAL BUILDING IMPACT
- RESIDENTIAL PROPERTY IMPACT
- PROPOSED TRAIL RIGHT-OF-WAY
- PROPOSED RIGHT-OF-WAY
- PROPERTY LINES

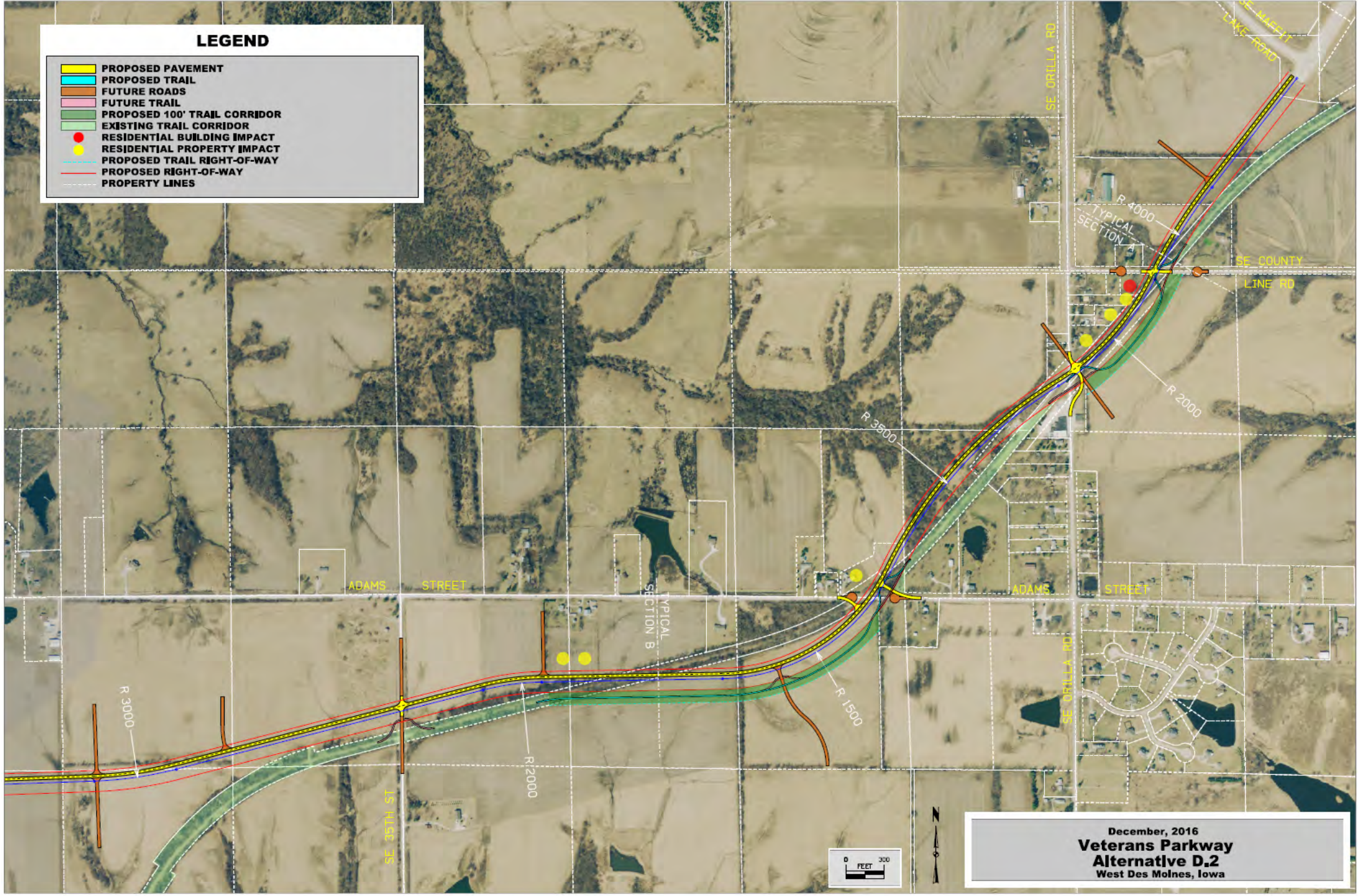


December, 2016  
**Veterans Parkway  
 Alternative D.1**  
 West Des Moines, Iowa



**LEGEND**

- PROPOSED PAVEMENT
- PROPOSED TRAIL
- FUTURE ROADS
- FUTURE TRAIL
- PROPOSED 100' TRAIL CORRIDOR
- EXISTING TRAIL CORRIDOR
- RESIDENTIAL BUILDING IMPACT
- RESIDENTIAL PROPERTY IMPACT
- PROPOSED TRAIL RIGHT-OF-WAY
- PROPOSED RIGHT-OF-WAY
- PROPERTY LINES



December, 2016  
**Veterans Parkway  
 Alternative D.2**  
 West Des Moines, Iowa